

Technical description FRv 200

Directly driven radial fan type FRv 200 for transporting corrosive and explosive gases, vapours and mists with a dust content of $< 5 \text{ mg/m}^3$ and a temperature range from -5 to $+40^\circ\text{C}$. Maximum environmental temperature 40°C .

Housing of PPs, in injected design with integrated maintenance-free sealing system consisting of condensate protection as circumferential drip edge and a labyrinth seal. For the Ex design, additionally with grease barrier,

refillable from the outside, and lip seal VDMA 24 169 and RL/94/9/EC (ATEX) compliant. Condensate drain socket at the lowest housing point.

High performance impeller with backward curved blades of PPs, in injected design with back vanes for guaranteed negative pressure at the shaft lead-through in operation.

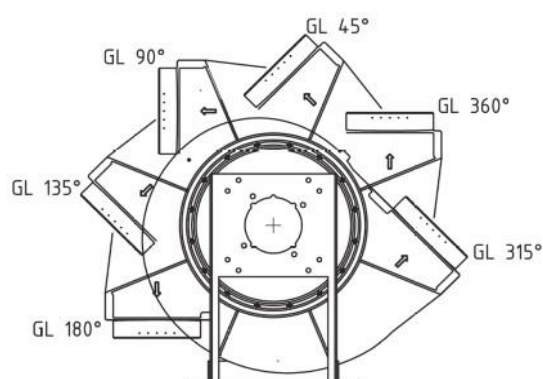
Galvanized steel frame with front housing support for increased stability and precise alignment of inlet nozzle/impeller. Compact assembly dimensions due to adjustable peak height.

ATEX-compliant direct drive via IC-34 standard motor with temperature-resistant attachment parts at housing and impeller to avoid deformations of the mounting position also in case of failure.

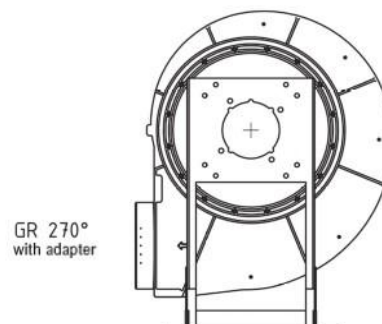
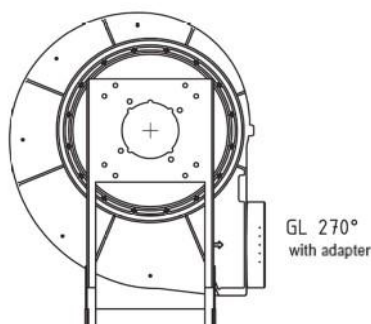
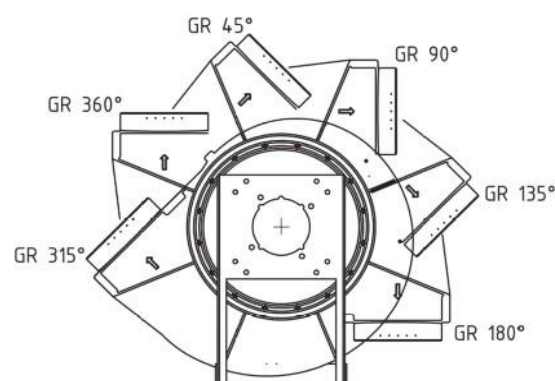
Technical data

Connection: $\varnothing 200 \text{ mm}$

Housing position: GL / GR



Housing positions
seen from motor.

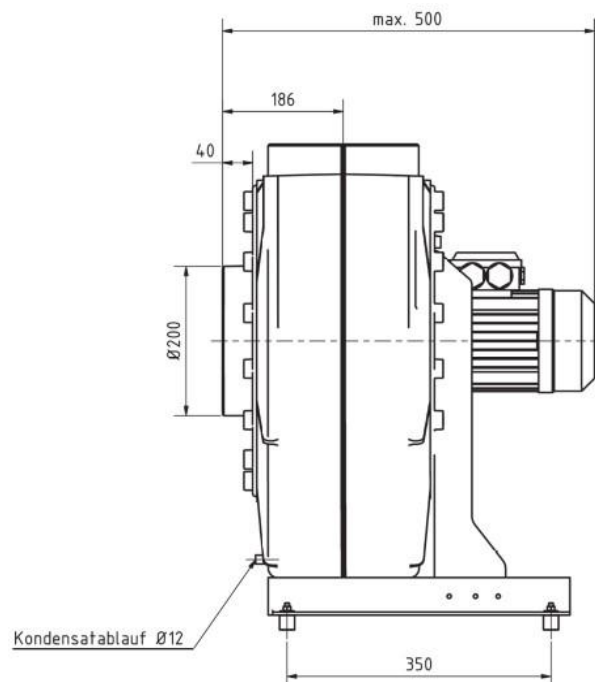
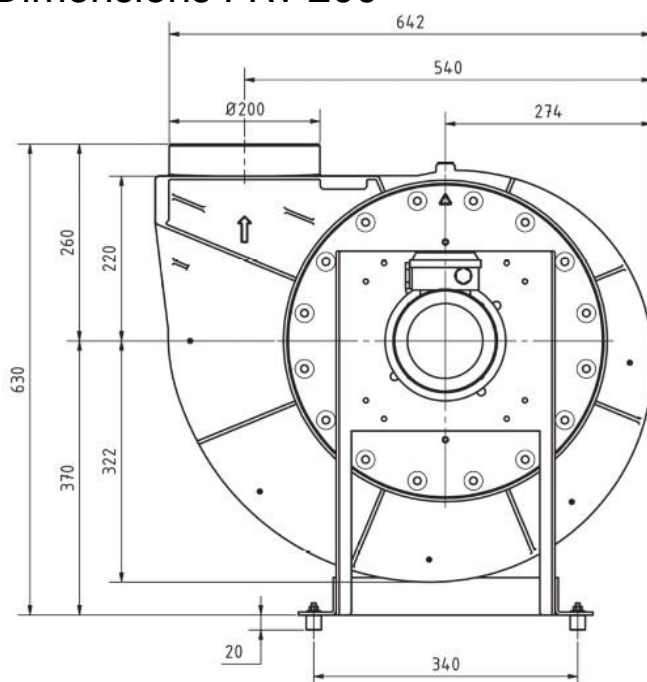


Technical data

Type	Art. no	Flow m ³ /h	Total pressure Pa	Motor protection	Poles	Speed at 50 Hz	From 10 Hz	To 60 Hz	Motor capacity kW	Nominal current A	Scale	Motor type
FRv 200/2/L/D/PTC	1001483F	330-2800	1420-410	PTC	2	3000	564	3384	0,75	2,00	80	B5/IP55
FRv 200/2/R/D/PTC	1001490F	330-2800	1420-410	PTC	2	3000	564	3384	0,75	2,00	80	B5/IP55
FRv 200/4/L/D/PTC	1001607F	160-1300	310-90	PTC	4	1500	266	1596	0,25	0,86	71	B5/IP55
FRv 200/4/R/D/PTC	1001608F	160-1300	310-90	PTC	4	1500	266	1596	0,25	0,86	71	B5/IP55
FRv 200/6/L/D/PTC	1002133F	120-800	150-30	PTC	6	1000	178	1068	0,18	1,00	71	B5/IP55
FRv 200/6/R/D/PTC	1002134F	120-800	150-30	PTC	6	1000	178	1068	0,18	1,00	71	B5/IP55
FRv 200/2/L/D/EX	1001484F	330-2800	1420-410	EEx e II T 3	2	3000	~	~	0,75	1,76	80	B5/IP55
FRv 200/2/R/D/EX	1001210F	330-2800	1420-410	EEx e II T 3	2	3000	~	~	0,75	1,76	80	B5/IP55
FRv 200/4/L/D/EX	1001209F	160-1300	310-90	EEx e II T 3	4	1500	~	~	0,25	0,79	71	B5/IP55
FRv 200/4/R/D/EX	1001587F	160-1300	310-90	EEx e II T 3	4	1500	~	~	0,25	0,79	71	B5/IP55
FRv 200/6/L/D/EX	1001535F	120-800	150-30	EEx e II T 3	6	1000	~	~	0,37	1,30	80	B5/IP55
FRv 200/6/R/D/EX	1002136F	120-800	150-30	EEx e II T 3	6	1000	~	~	0,37	1,30	80	B5/IP55
FRv 200/2/L/D/Exde	1002387F	330-2800	1420-410	EEx de II T 4	2	3000	564	3384	0,75	3,11	80	B5/IP55
FRv 200/2/R/D/Exde	1002388F	330-2800	1420-410	EEx de II T 4	2	3000	564	3384	0,75	3,11	80	B5/IP55
FRv 200/4/L/D/Exde	1002389F	160-1300	310-90	EEx de II T 4	4	1500	266	1596	0,25	1,73	71	B5/IP55
FRv 200/4/R/D/Exde	1002406F	160-1300	310-90	EEx de II T 4	4	1500	266	1596	0,25	1,73	71	B5/IP55
FRv 200/2/L/D/WS	1001680F	330-2800	1420-410	PTC	2	3000	~	~	0,75	2,00	80	B5/IP55
FRv 200/2/R/D/WS	1001681F	330-2800	1420-410	PTC	2	3000	~	~	0,75	2,00	80	B5/IP55
FRv 200/4/L/D/WS	1001682F	160-1300	310-90	PTC	4	1500	~	~	0,25	0,86	71	B5/IP55
FRv 200/4/R/D/WS	1001683F	160-1300	310-90	PTC	4	1500	~	~	0,25	0,86	71	B5/IP55
FRv 200/2/4/L/D/PTC	1002137F	160-2800	1420-90	PTC	2/4	3000/1500	~	~	0,95/0,25	2,3/0,7	80	B5/IP55
FRv 200/2/4/R/D/PTC	1002138F	160-2800	1420-90	PTC	2/4	3000/1500	~	~	0,95/0,25	2,3/0,7	80	B5/IP55
FRv 200/4/6/L/D/PTC	1002139F	120-1300	310-30	PTC	4/6	1500/1000	~	~	0,26/0,075	1,07/0,75	71	B5/IP55
FRv 200/4/6/R/D/PTC	1002140F	120-1300	310-30	PTC	4/6	1500/1000	~	~	0,26/0,075	1,07/0,75	71	B5/IP55
FRv 200/4/8/L/D/PTC	1002141F	80-1300	310-30	PTC	4/8	1500/750	~	~	0,26/0,051	0,86/0,31	71	B5/IP55

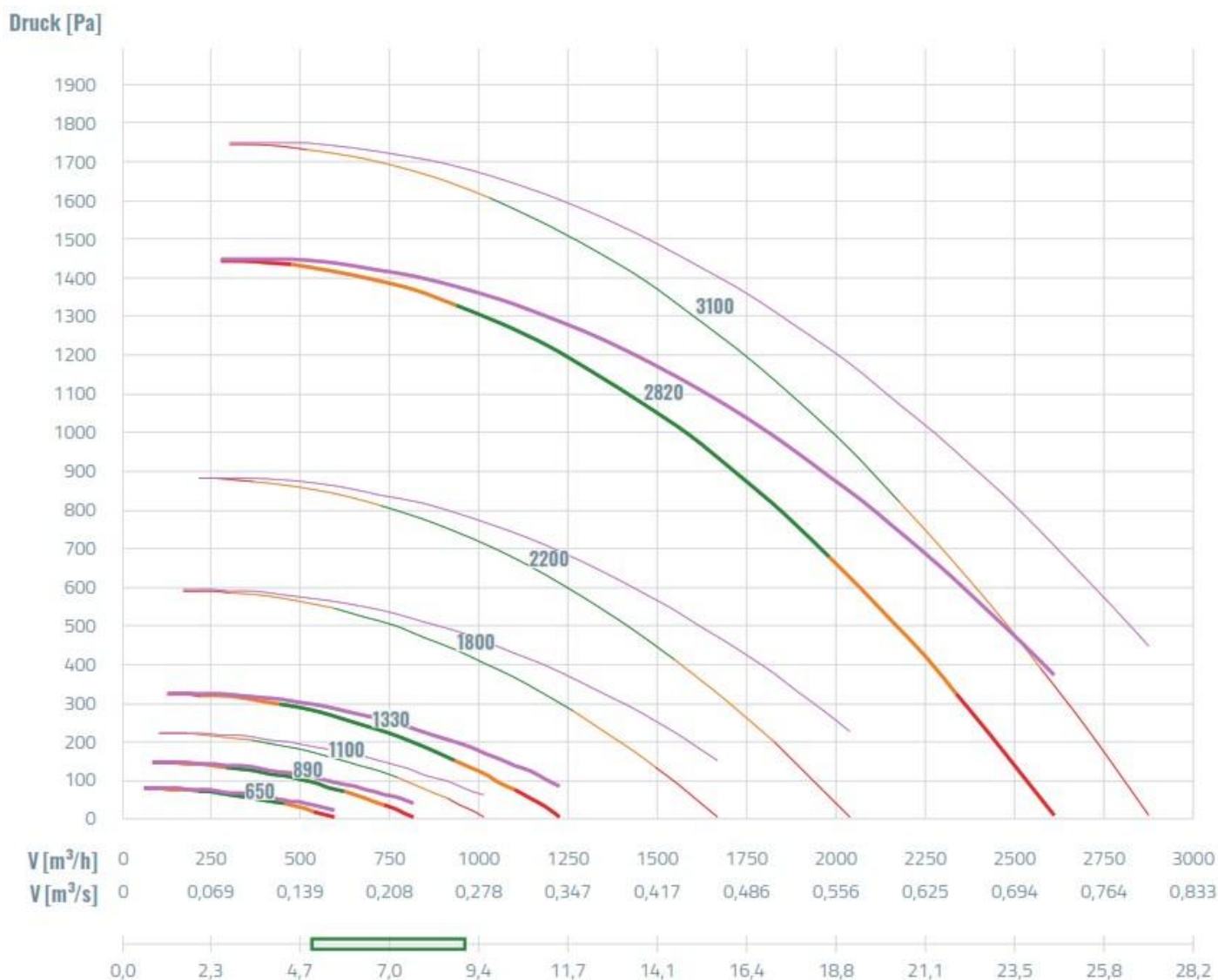
~ = Not possible

Dimensions FRv 200



Total weight of fan incl. motor ca. 25 kg, for ATEX ca. 30 kg

Curve for fan type FRv 200



Noise level information

According to DIN 45635 incl. motor

Speed	free intake/ free blowing out acoustif power level A - stated; Lw5A - Lw6A								free intake / free blowing out acoustic pressure level	measuring surface acoustic	
	Octavos center frequency (Hz)								1 m distance Lp5A = Lp6A	pressure level 1 m distance	
	[1/min]	63	125	250	500	1000	2000	4000	8000	dB(A)	dB(A)
2850	64	72	83	78	76	72	65	55		77	68
1450	46	60	57	58	55	50	42	31		56	47